

Mary, Mary Quite Contrary



Mary(x2) quite contrary, how does your garden grow?



With silver bells and cockle shells



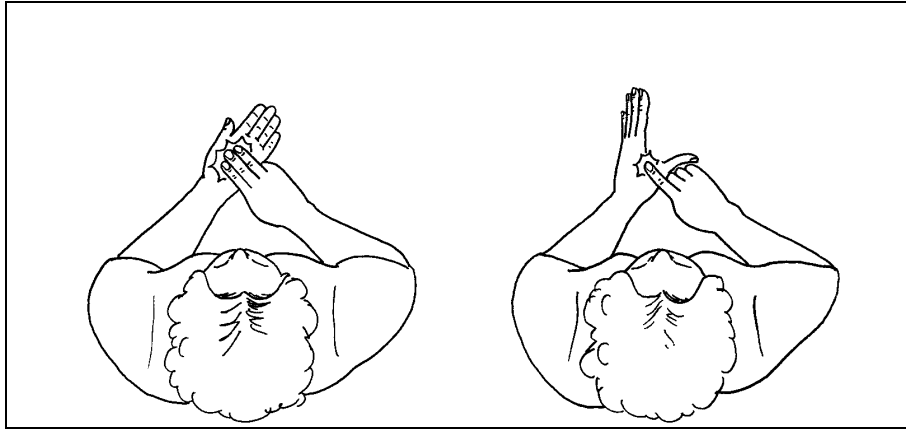
and pretty maids all in a row.



Look for the frog. Colour it red.
Can you make some tissuepaper flowers?

Mary, Mary Quite Contrary

MARY



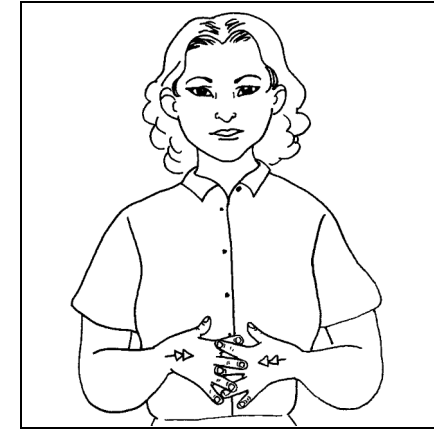
Make letter shape "M"; followed by letter shape "Y"

CONTRARY (ARGUE)



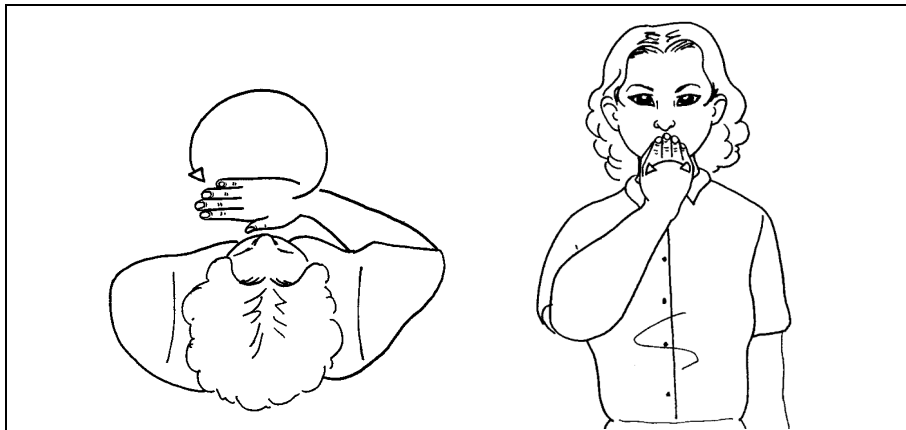
Little finger hands (palms back, pointing up), make two short movements towards each other.

HOW



Open hands (palms in/back, pointing forward/in) interlace.
Repeat.

GARDEN



Working flat hand (palm down pointing in) makes inward circle; then moves up changing to bunched hand (palm back, pointing up) and waves from side to side beneath nose to sign "flower".

GROW



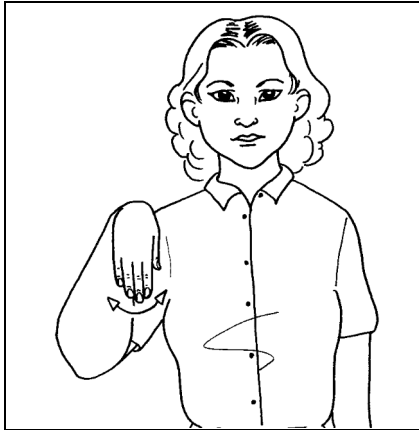
Working bunched hand (palm back, pointing up) behind supporting flat hand (palm back, pointing in); working hand moves up slowly changing to open hand.

SILVER



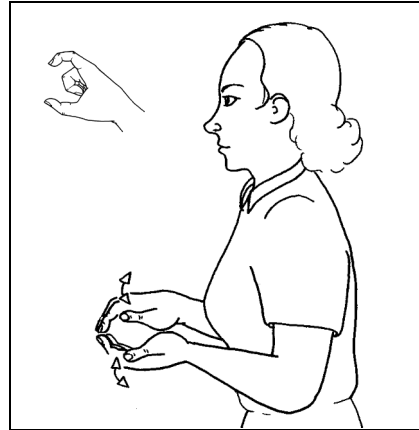
Make abbreviated letter shape "S"; then working hand springs up changing to open hand (palm back, pointing in/up).

BELLS



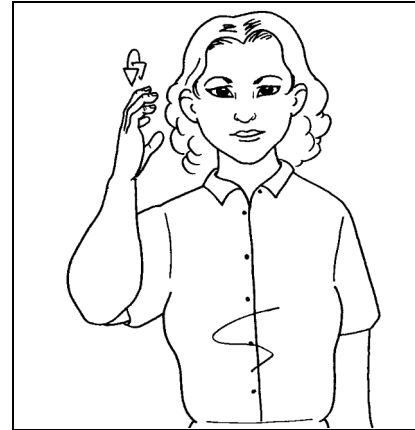
Working flat hand at shoulder height bent at wrist (palm back, pointing down) swings from side to side.

COCKLE



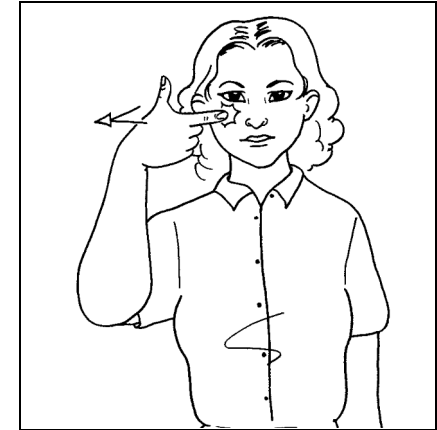
Make letter shape "C"; then cupped hands (palms facing, pointing forward) working hand above, touch at wrists, hands bend apart and back together.

SHELLS



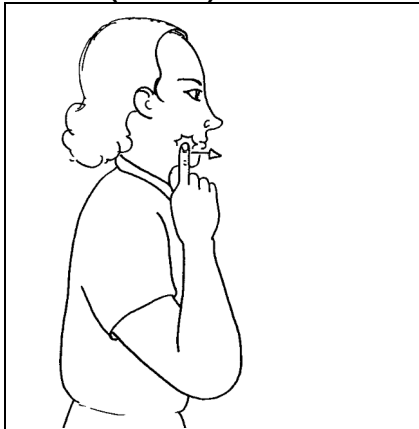
Working, loosely clawed, hand (palm in, pointing up) shakes slightly over ear.

PRETTY



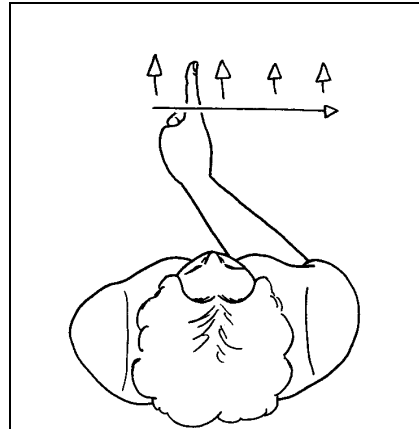
Working "L" hand (palm back, pointing in) index finger touches face below eye and moves out across cheek, closing to thumb hand (palm back, pointing in).

MAIDS (GIRLS)



Working index (palm in, pointing up) against side of mouth makes small forward movement twice.

ALL IN A ROW

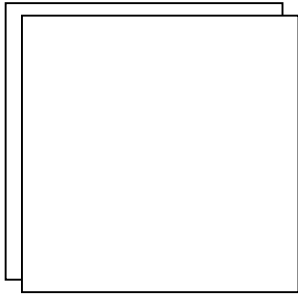


Working index points several times moving out to working side.

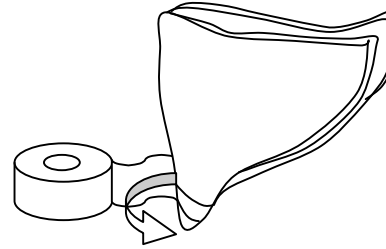
Make your own paper flowers
for
Mary, Mary Quite Contrary

Make your own Paper Flowers for Mary

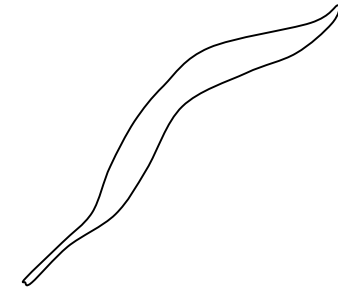
To make some beautiful tissue paper flowers you will need; squares of brightly coloured tissue paper, 15cmx15cm; strips of green tissue paper 2cm wide; green card; florists' wire; sticky tape and modelling clay.



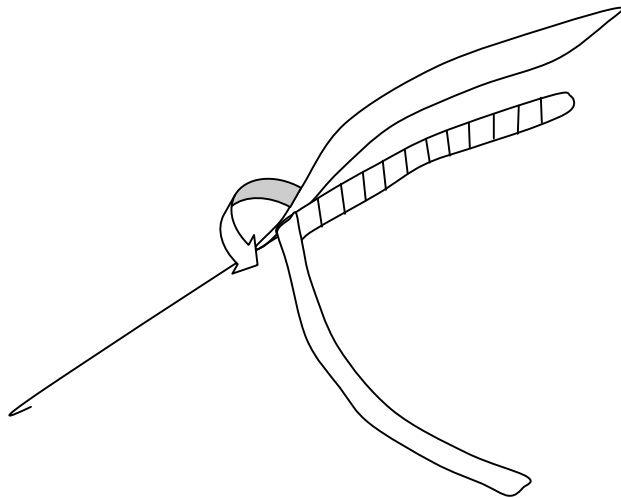
1. Use two sheets of tissue paper, lay one on top of the other. For a fuller bloom use up to four sheets, for more interest use different colours.



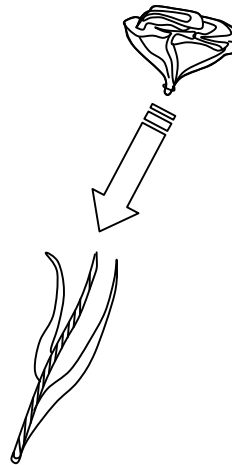
2. Fold the tissue in quarters, twist the middle up and secure with the sticky tape.



3. Cut leaf shapes from the green card, leaving a long stalk.



4. Wrap the green strips of tissue paper tightly around the florist wire, carefully attaching the leaves at the same time



5. Attach the flower heads to the stalks using sticky tape.



6. Arrange the flowers in groups by pushing into the modelling clay.

Descriptions which are provided free of charge still remain the copyright of Signalong The Communication Charity and must reference handshape, orientation, placement and movement. Where these signs are distributed out of the parameters of which they were supplied, Signalong must be acknowledged.

This resource may be reproduced and distributed, but must remain in its original format.

Company Limited by Guarantee no 2922636 | Reg. Office: Signalong The Communication Charity, 1 Old Winery Business Park, Cawston, Norwich, Norfolk, NR10 4FE | VAT No. 661 9509 15

Registered charity no. 1039788

www.signalong.org.uk

info@signalong.org.uk